

Postal Code 78704

Residential Statistics



February 2022

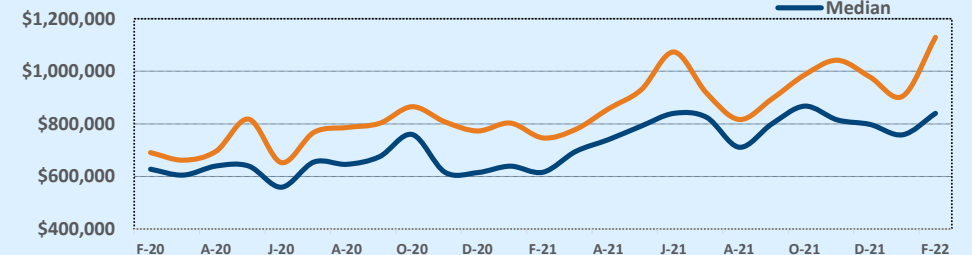
Listings	This Month			Year-to-Date		
	Feb 2022	Feb 2021	Change	2022	2021	Change
Single Family Sales	25	38	-34.2%	43	85	-49.4%
Condo/TH Sales	29	40	-27.5%	49	82	-40.2%
Total Sales	54	78	-30.8%	92	167	-44.9%
New Homes Only	4	12	-66.7%	5	24	-79.2%
Resale Only	50	66	-24.2%	87	143	-39.2%
Sales Volume	\$60,977,916	\$58,220,545	+4.7%	\$95,382,816	\$129,693,916	-26.5%
New Listings	60	61	-1.6%	113	148	-23.6%
Pending	--	--	--	--	--	--
Withdrawn	--	1	--	5	8	-37.5%
Expired	--	1	--	5	8	-37.5%
Months of Inventory	0.5	0.8	-43.6%	N/A	N/A	--

Average	This Month			Year-to-Date		
	Feb 2022	Feb 2021	Change	2022	2021	Change
List Price	\$1,025,668	\$735,522	+39.4%	\$963,446	\$775,795	+24.2%
List Price/SqFt	\$633	\$479	+32.0%	\$635	\$482	+31.7%
Sold Price	\$1,129,221	\$746,417	+51.3%	\$1,036,770	\$776,610	+33.5%
Sold Price/SqFt	\$685	\$486	+41.1%	\$673	\$483	+39.4%
Sold Price / Orig LP	108.1%	101.3%	+6.6%	106.1%	100.3%	+5.8%
Days on Market	19	36	-48.9%	21	41	-47.7%

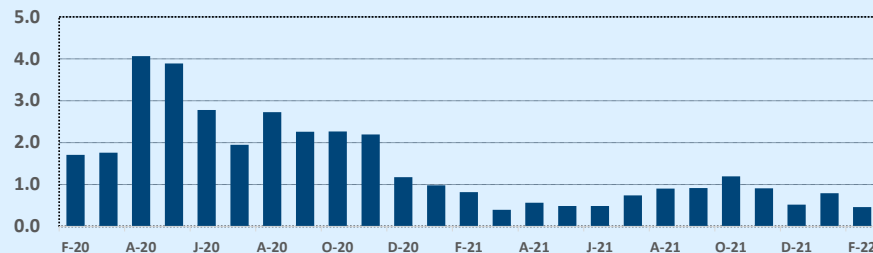
Median	This Month			Year-to-Date		
	Feb 2022	Feb 2021	Change	2022	2021	Change
List Price	\$812,500	\$608,500	+33.5%	\$782,500	\$634,900	+23.2%
List Price/SqFt	\$599	\$461	+29.9%	\$586	\$472	+24.1%
Sold Price	\$840,000	\$616,000	+36.4%	\$773,000	\$629,900	+22.7%
Sold Price/SqFt	\$627	\$474	+32.4%	\$607	\$466	+30.1%
Sold Price / Orig LP	104.7%	100.0%	+4.7%	102.6%	100.0%	+2.6%
Days on Market	5	10	-47.4%	6	17	-64.7%

Price Range	This Month			Year-to-Date		
	New	Sales	DOM	New	Sales	DOM
\$149,999 or under	--	--	--	--	--	--
\$150,000- \$199,999	--	--	--	--	--	--
\$200,000- \$249,999	1	--	--	2	--	--
\$250,000- \$299,999	3	1	1	4	3	36
\$300,000- \$349,999	1	4	19	3	6	37
\$350,000- \$399,999	2	1	6	7	4	9
\$400,000- \$449,999	3	5	18	3	8	12
\$450,000- \$499,999	3	1	74	3	1	74
\$500,000- \$549,999	1	1	29	2	1	29
\$550,000- \$599,999	4	3	11	6	6	27
\$600,000- \$699,999	3	5	4	9	7	5
\$700,000- \$799,999	3	5	30	5	11	27
\$800,000- \$899,999	3	2	4	10	3	5
\$900,000- \$999,999	5	7	10	10	10	21
\$1M - \$1.99M	20	12	14	32	23	15
\$2M - \$2.99M	6	4	62	13	6	53
\$3M+	2	3	8	4	3	8
Totals	60	54	19	113	92	21

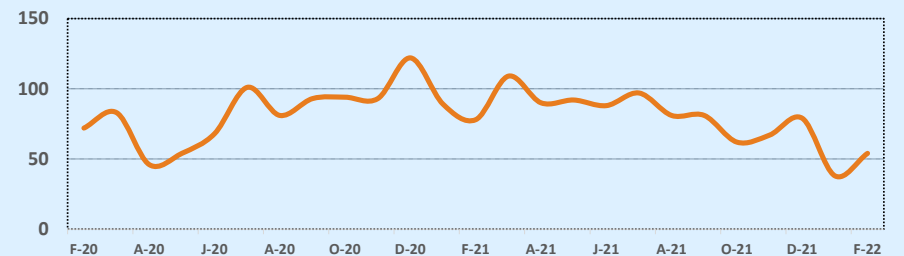
Average & Median Sales Price - Last Two Years



Months of Inventory - Last Two Years



Number of Sales - Last Two Years



Based on information from the Austin Board of REALTORS® (alternatively, from ACTRIS). Neither the Board nor ACTRIS guarantees or is in any way responsible for its accuracy. The Austin Board of REALTORS®, ACTRIS and their affiliates provide the MLS and all content therein "AS IS" and without any warranty, express or implied. Data maintained by the Board or ACTRIS may not reflect all real estate activity in the market.